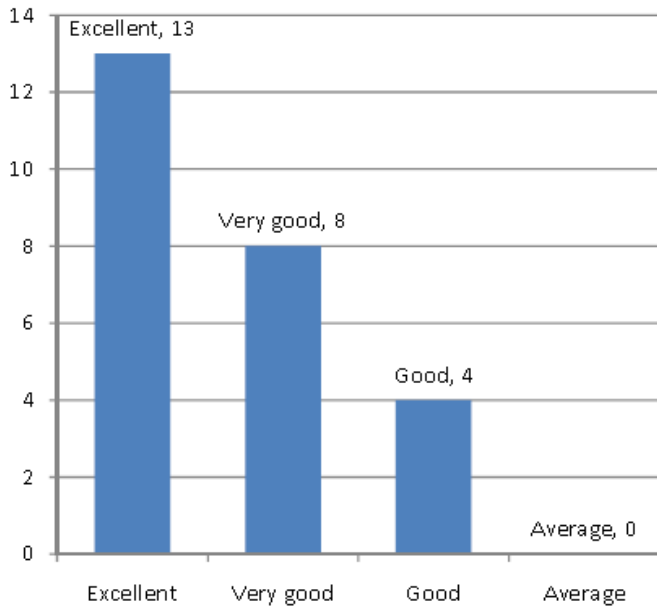
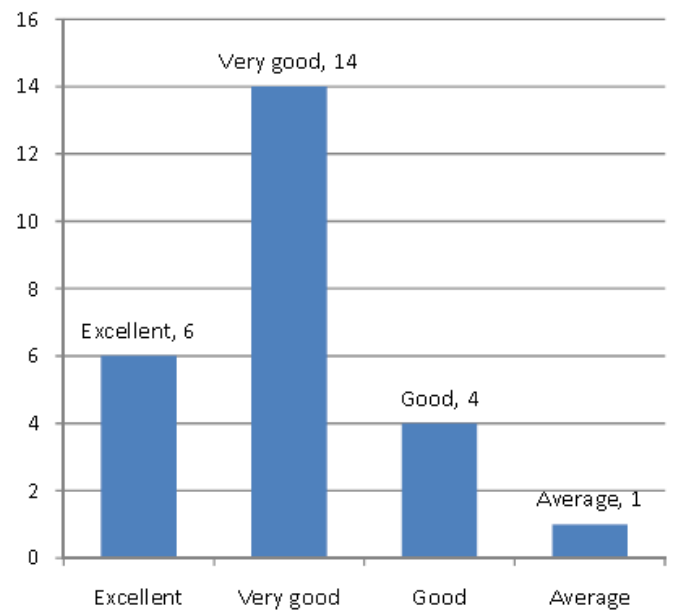


Alumni Feedback – 2013

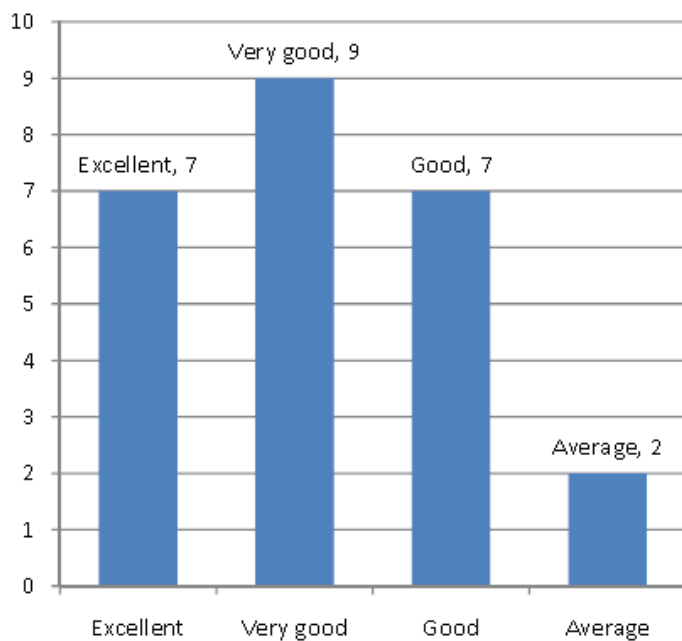
1. Depth of the course content



2. Role of alumni in revising the syllabus



3. Applicability / Relevance to real life situations.



4. Learning value (in terms of knowledge, concepts, manual skills, analytical abilities and broadening perspectives).



5. Availability of reading material (Library).



6. Infrastructure available.



7. Extra-curricular activities.



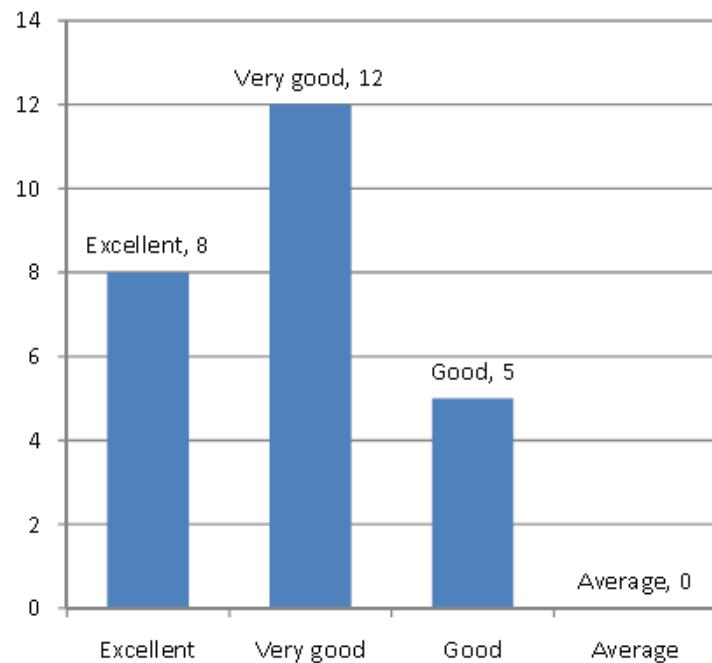
8. Status of syllabus in improving the skills.



9. CBCS pattern/Elective/NME/Part V Activities.

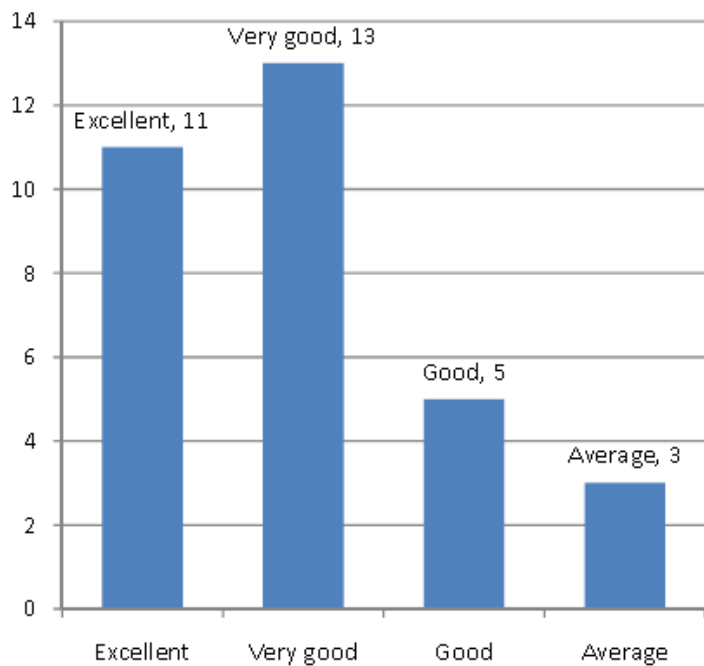


10. Examination system.



Parent Feedback – 2013

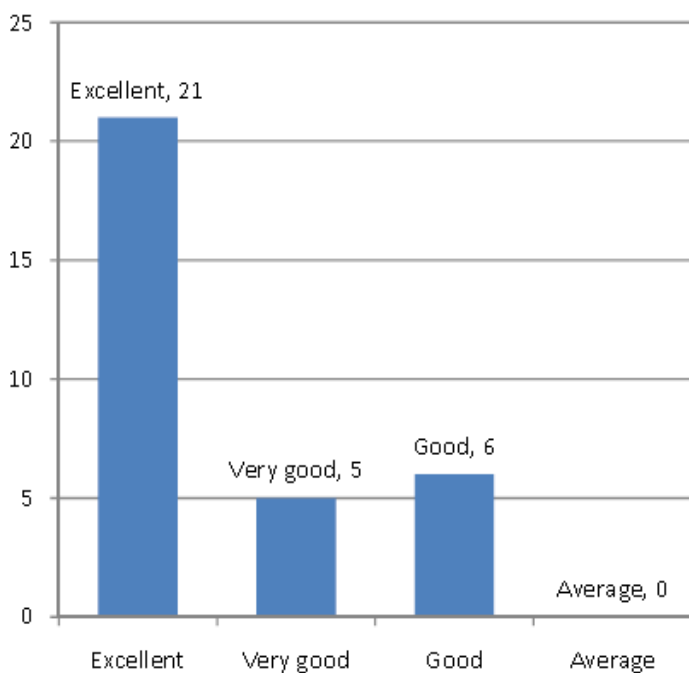
1. Nature of the syllabus of your ward.



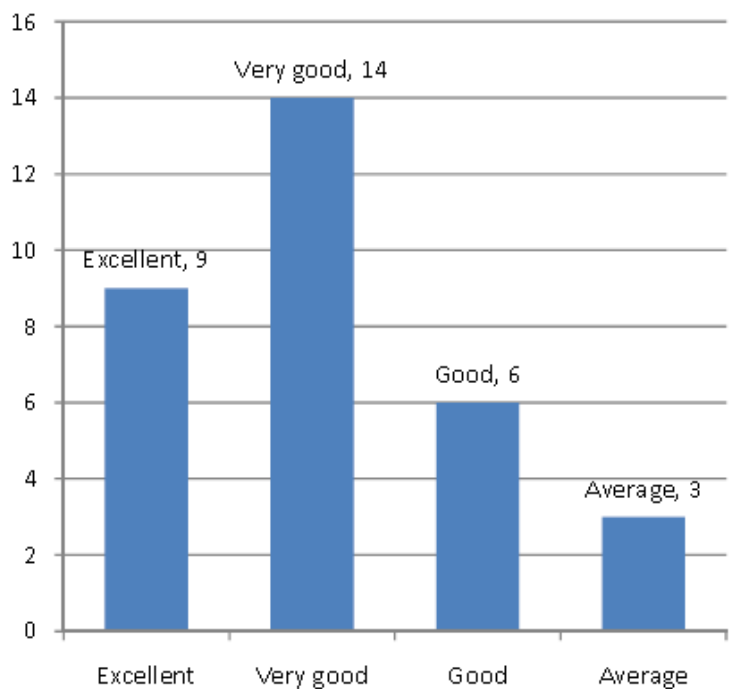
2. Your view on the syllabus in terms of the present day competition?



3. Exposure of your ward in the syllabus as far as career orientation is concerned?



4. Status of CBCS pattern/Elective/ NME/Part V Activities.



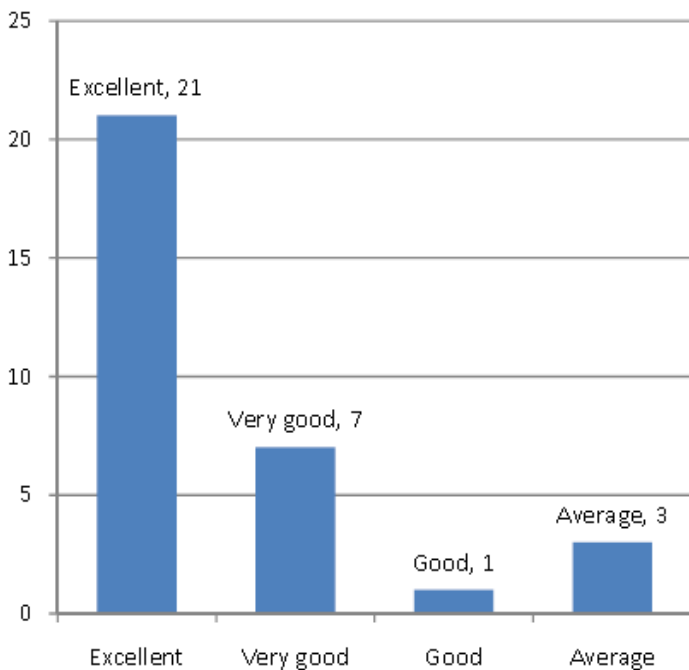
5. Status of syllabus in improving the skill of your ward.



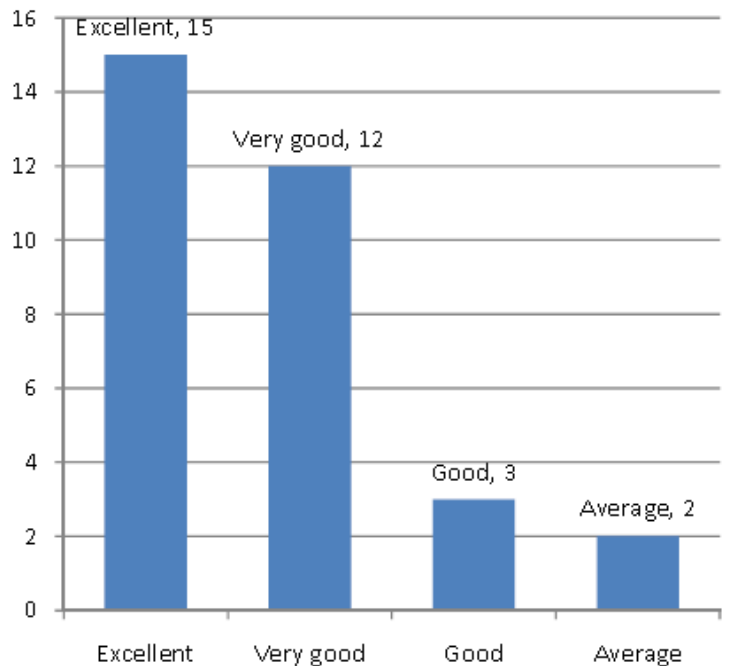
6. Examination system adopted in the college.



7. Quality of teaching.



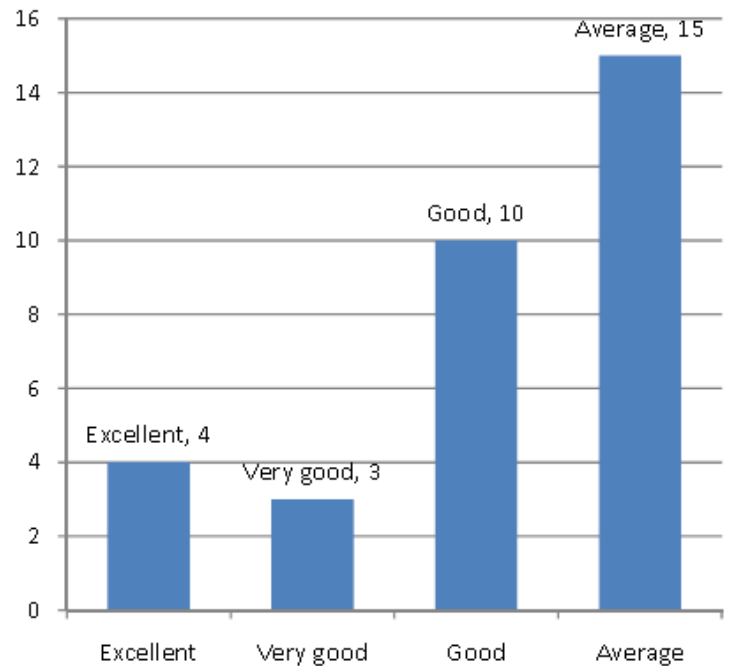
8. How far your ward is physically secured in the campus?



9. Students discipline in the college.



10. Your opinion on the following facilities of the college: **Hostel**



10. Your opinion on the following facilities of the college: **Library**



10. Your opinion on the following facilities of the college: **Transport**



10. Your opinion on the following facilities of the college: **Medical**



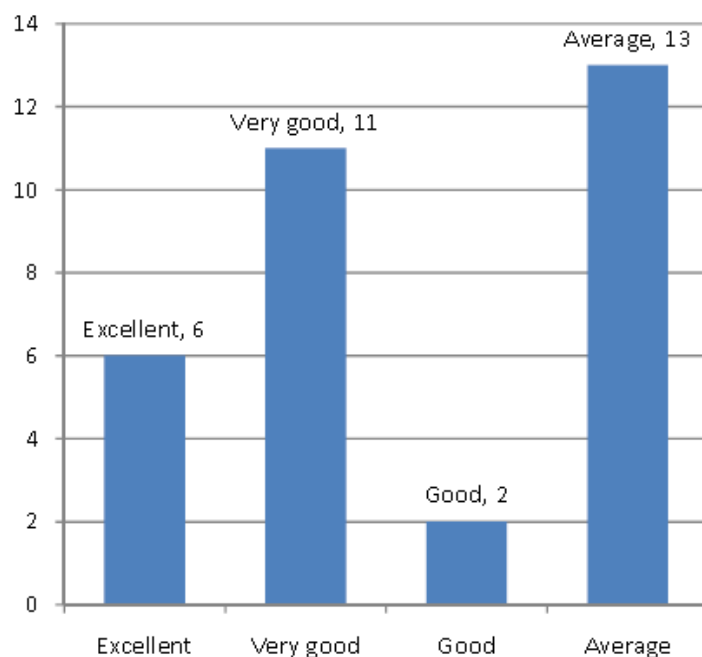
10. Your opinion on the following facilities of the college: **Internet**



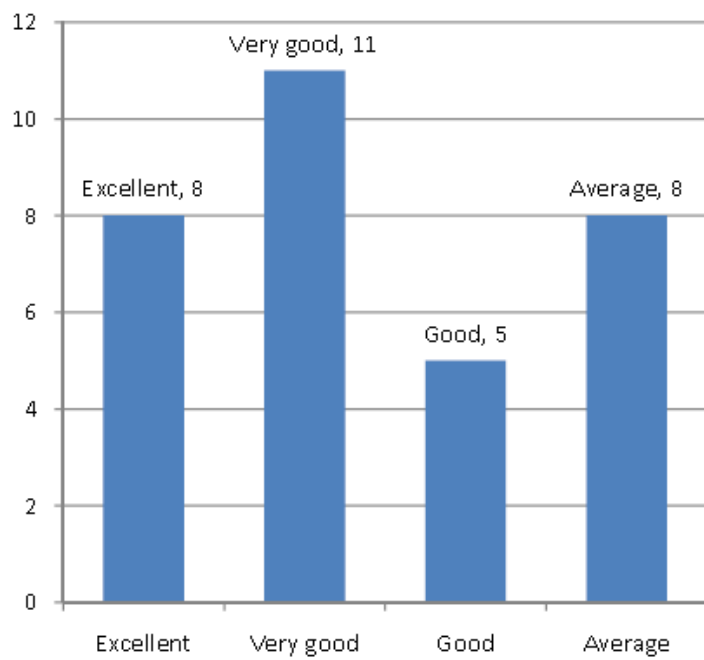
10. Your opinion on the following facilities of the college: **Canteen**



10. Your opinion on the following facilities of the college: **Counselling & Guidance**

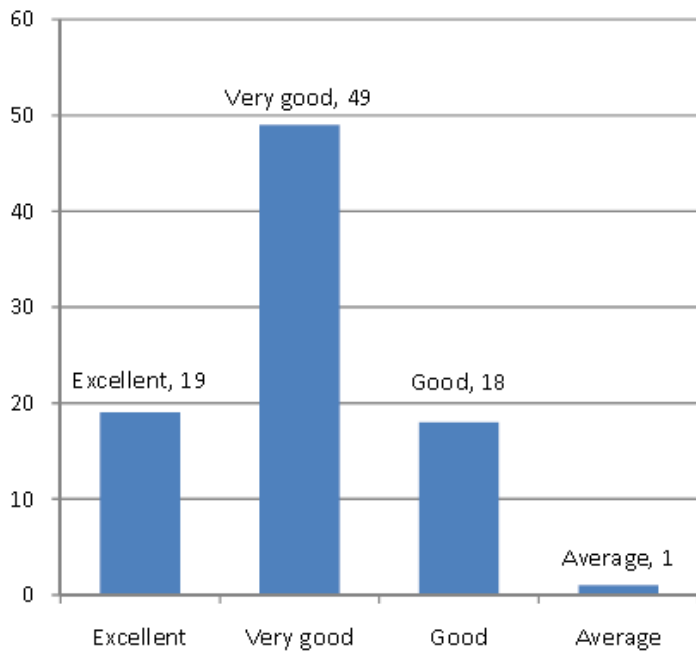


10. Your opinion on the following facilities of the college: **Extracurricular Activities**



Staff Feedback – 2013

1. Availability of teaching aid.



2. Depth of the course content.



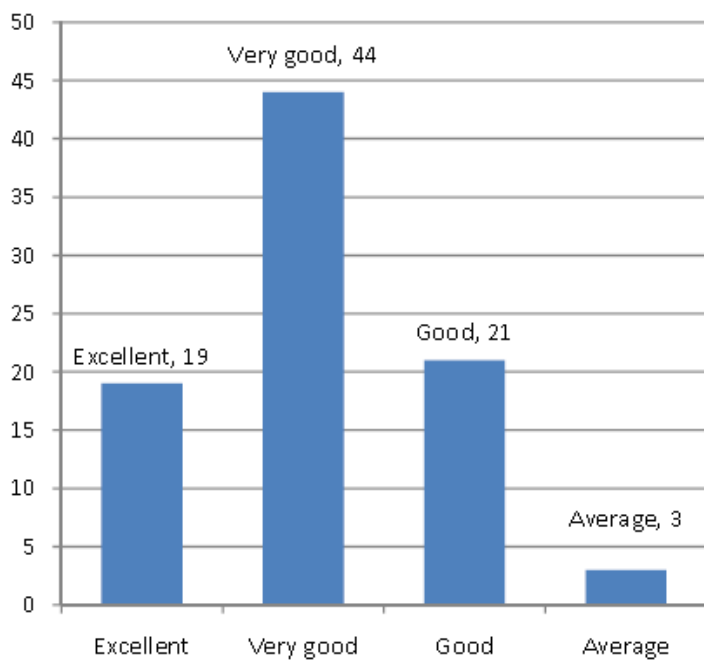
3. CBCS pattern/Elective/NME/Part V activities.



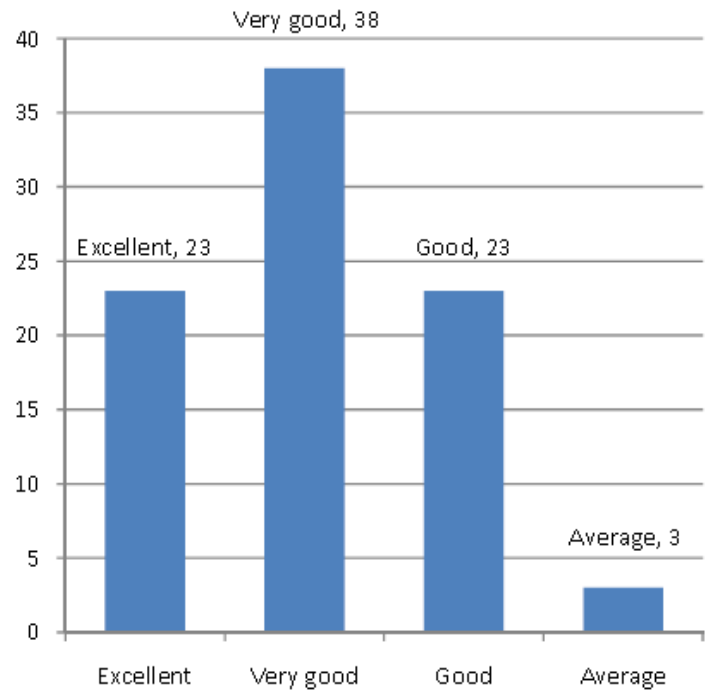
4. Relevance of the syllabus to the needs of the society.



5. Syllabus in terms of promoting human values.



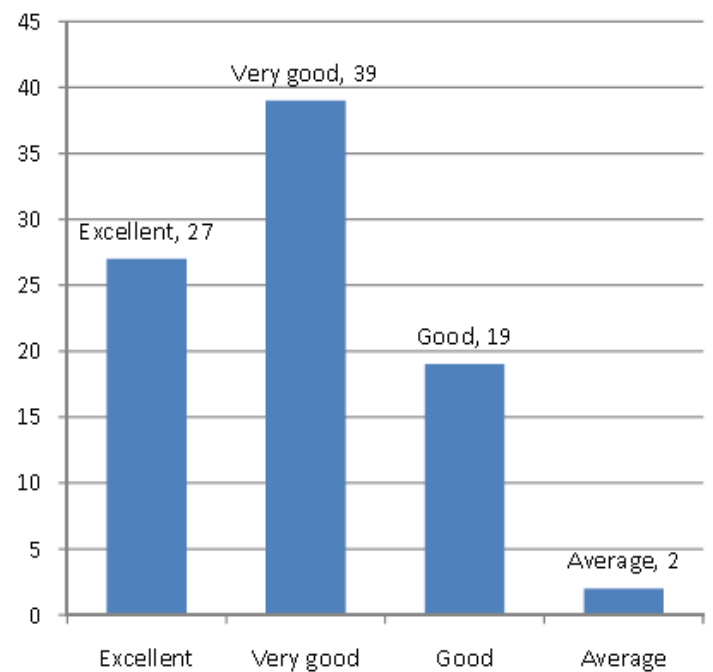
6. Status of the syllabus in promoting skills for the competitive examinations.



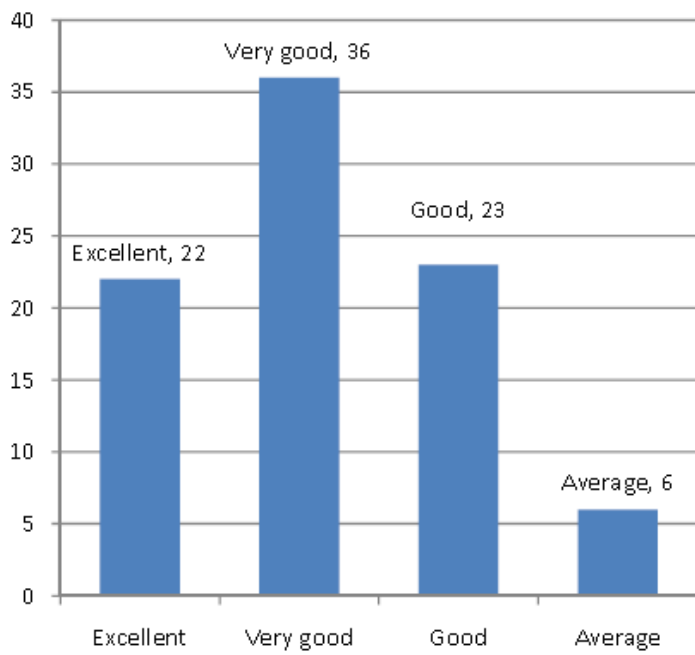
7. Status of the syllabus in promoting research interest.



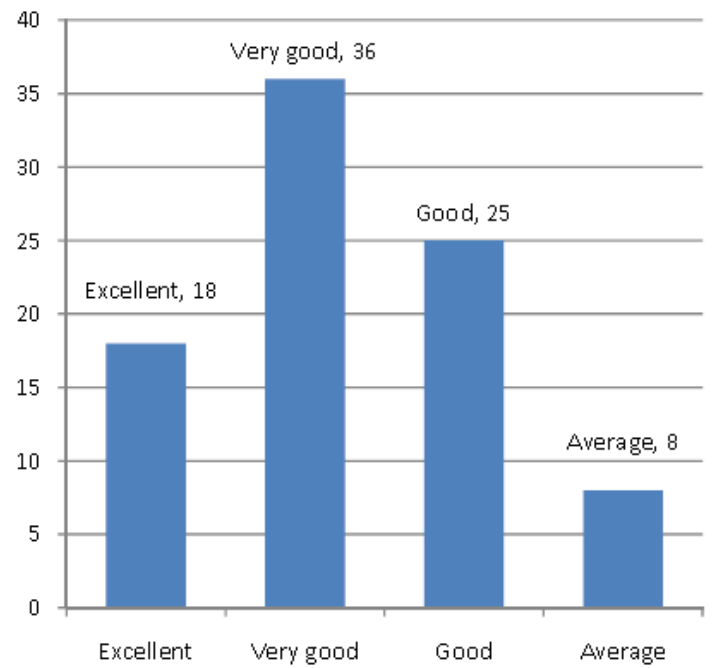
8. Discipline of the students.



9. Interaction of the students in the class rooms.

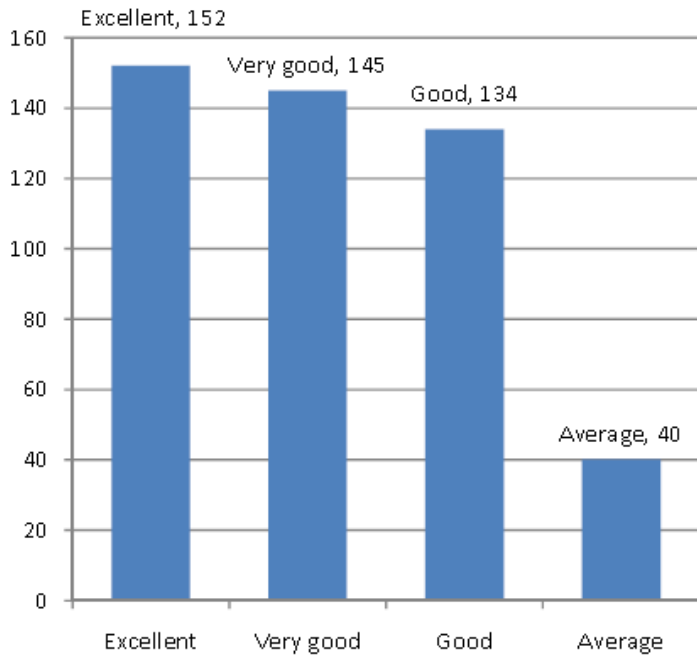


10. Infrastructure available.



Student Feedback – 2013

1. Depth of the course content



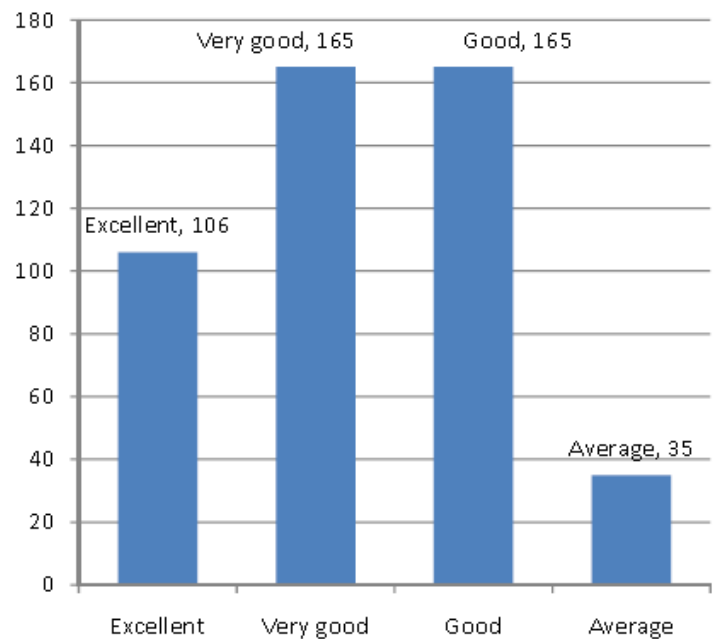
2. Teaching faculty



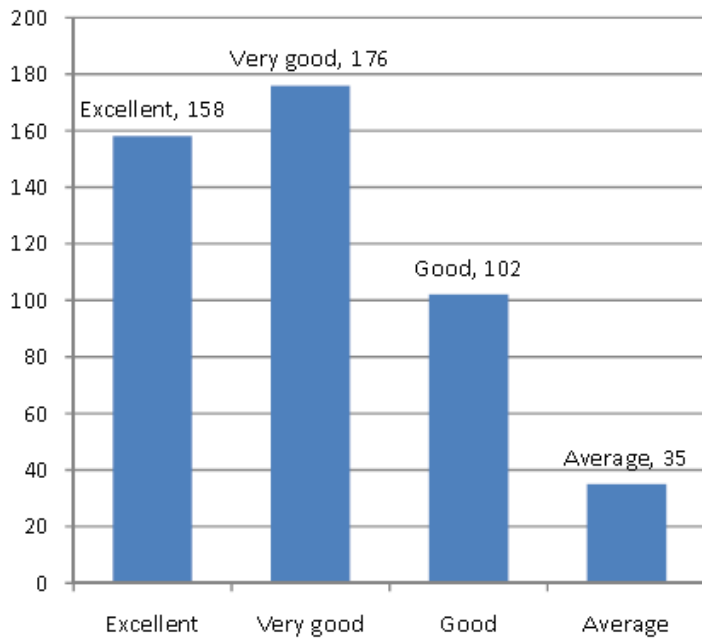
3. Applicability / Relevance to real life situations.



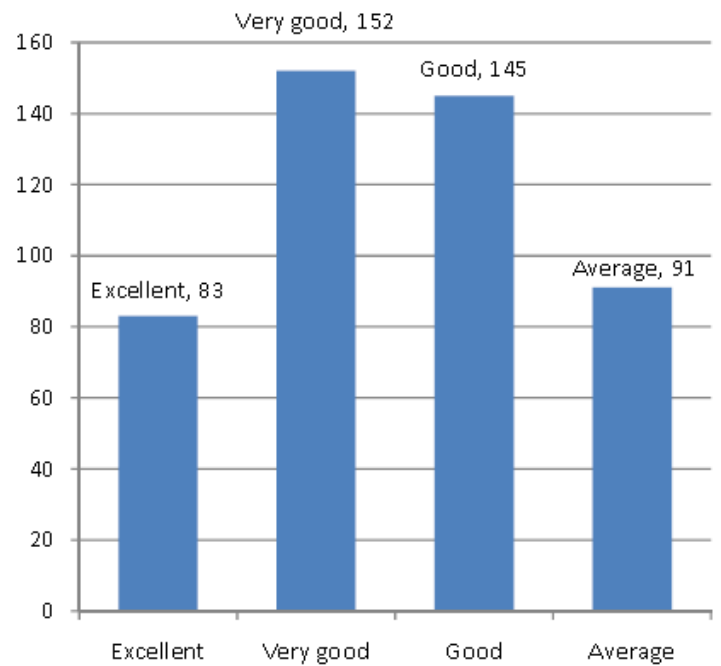
4. Learning value (in terms of knowledge, concepts, manual skills, analytical abilities and broadening perspectives).



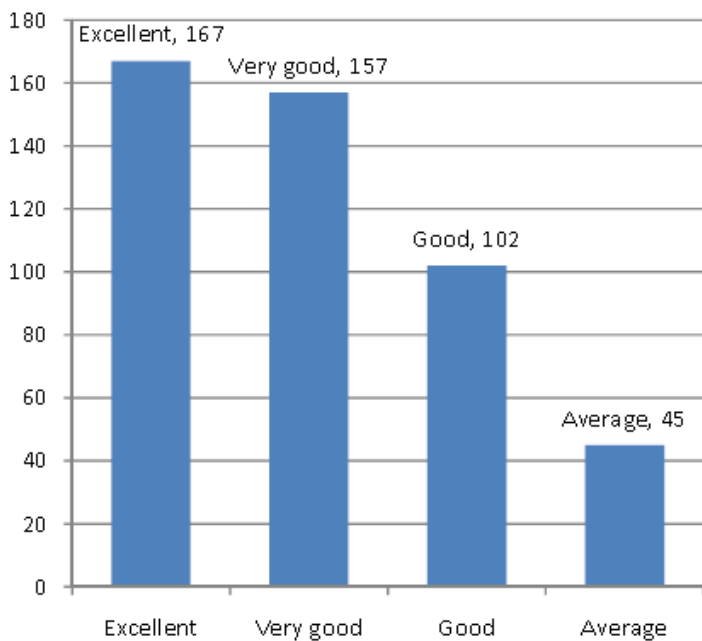
5. Availability of reading material (Library).



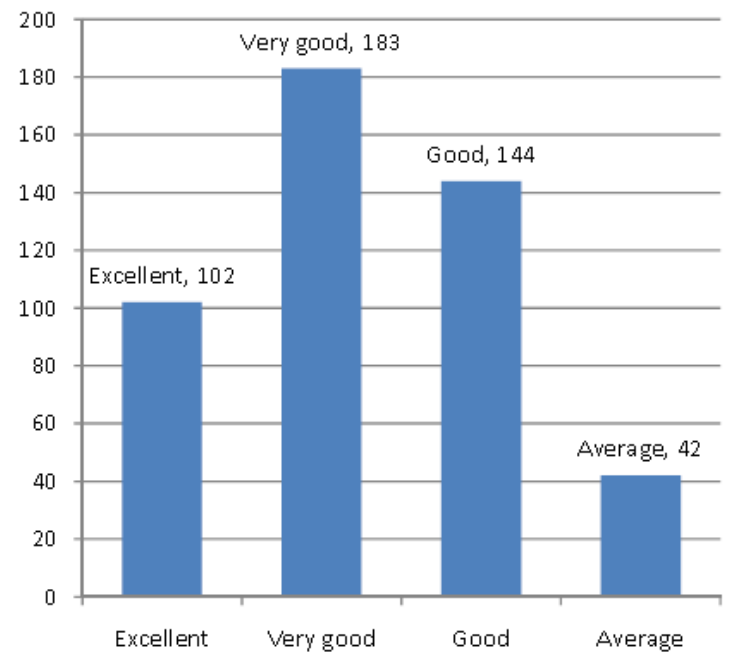
6. Infrastructure available.



7. Extra-curricular activities.



8. Status of syllabus in improving the skills.



9. CBCS pattern/Elective/NME/Part V Activities.



10. Examination system.

